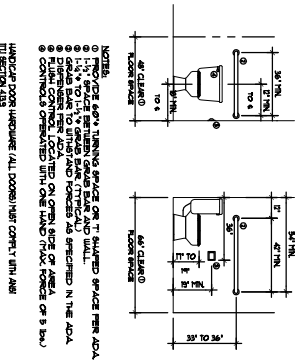


THIS DOCUMENT IS INTENDED ONLY FOR USE ON THE PROJECT SPECIFIED IN THE TITLE BLOCK. NO WARRANTIES ARE IMPLIED EXCEPT FOR THIS PROJECT AND SPECIFIC LOCATION AUTHORIZED BY THIS ENGINEER.

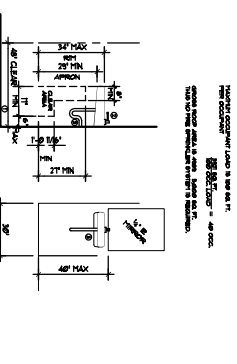
FLOOR PLAN

SCALE: 1/8" = 1'-0"
 SCALE: 1/4" = 1'-0"
 SCALE: 1/2" = 1'-0"

HANDICAPPED RESTROOM ELEVATIONS
 SCALE: 3/8" = 1'-0"



NOTES:
 1. ALL WORK SHALL BE IN ACCORDANCE WITH THE 2018 INTERNATIONAL BUILDING CODE (IBC) AND ALL LOCAL ORDINANCES.
 2. ALL WORK SHALL BE IN ACCORDANCE WITH THE 2018 INTERNATIONAL PLUMBING CODE (IPC) AND ALL LOCAL ORDINANCES.
 3. ALL WORK SHALL BE IN ACCORDANCE WITH THE 2018 INTERNATIONAL ELECTRICAL CODE (IEC) AND ALL LOCAL ORDINANCES.
 4. ALL WORK SHALL BE IN ACCORDANCE WITH THE 2018 INTERNATIONAL MECHANICAL CODE (IMC) AND ALL LOCAL ORDINANCES.
 5. ALL WORK SHALL BE IN ACCORDANCE WITH THE 2018 INTERNATIONAL FIRE AND SAFETY CODE (IFSC) AND ALL LOCAL ORDINANCES.
 6. ALL WORK SHALL BE IN ACCORDANCE WITH THE 2018 INTERNATIONAL ENERGY CONSERVATION CODE (IECC) AND ALL LOCAL ORDINANCES.
 7. ALL WORK SHALL BE IN ACCORDANCE WITH THE 2018 INTERNATIONAL SMOKE AND ALARM CODE (ISAC) AND ALL LOCAL ORDINANCES.
 8. ALL WORK SHALL BE IN ACCORDANCE WITH THE 2018 INTERNATIONAL ACCESSIBILITY STANDARDS AND TECHNIQUES (IAS) AND ALL LOCAL ORDINANCES.
 9. ALL WORK SHALL BE IN ACCORDANCE WITH THE 2018 INTERNATIONAL GREEN BUILDING CONSTRUCTION CONVENTIONS (IGBC) AND ALL LOCAL ORDINANCES.
 10. ALL WORK SHALL BE IN ACCORDANCE WITH THE 2018 INTERNATIONAL SUSTAINABLE DESIGN CONVENTIONS (ISDC) AND ALL LOCAL ORDINANCES.



NOTES:
 1. ALL WORK SHALL BE IN ACCORDANCE WITH THE 2018 INTERNATIONAL BUILDING CODE (IBC) AND ALL LOCAL ORDINANCES.
 2. ALL WORK SHALL BE IN ACCORDANCE WITH THE 2018 INTERNATIONAL PLUMBING CODE (IPC) AND ALL LOCAL ORDINANCES.
 3. ALL WORK SHALL BE IN ACCORDANCE WITH THE 2018 INTERNATIONAL ELECTRICAL CODE (IEC) AND ALL LOCAL ORDINANCES.
 4. ALL WORK SHALL BE IN ACCORDANCE WITH THE 2018 INTERNATIONAL MECHANICAL CODE (IMC) AND ALL LOCAL ORDINANCES.
 5. ALL WORK SHALL BE IN ACCORDANCE WITH THE 2018 INTERNATIONAL FIRE AND SAFETY CODE (IFSC) AND ALL LOCAL ORDINANCES.
 6. ALL WORK SHALL BE IN ACCORDANCE WITH THE 2018 INTERNATIONAL ENERGY CONSERVATION CODE (IECC) AND ALL LOCAL ORDINANCES.
 7. ALL WORK SHALL BE IN ACCORDANCE WITH THE 2018 INTERNATIONAL SMOKE AND ALARM CODE (ISAC) AND ALL LOCAL ORDINANCES.
 8. ALL WORK SHALL BE IN ACCORDANCE WITH THE 2018 INTERNATIONAL ACCESSIBILITY STANDARDS AND TECHNIQUES (IAS) AND ALL LOCAL ORDINANCES.
 9. ALL WORK SHALL BE IN ACCORDANCE WITH THE 2018 INTERNATIONAL GREEN BUILDING CONVENTIONS (IGBC) AND ALL LOCAL ORDINANCES.
 10. ALL WORK SHALL BE IN ACCORDANCE WITH THE 2018 INTERNATIONAL SUSTAINABLE DESIGN CONVENTIONS (ISDC) AND ALL LOCAL ORDINANCES.

A3
SHEET

CONTRACTOR

GARDNERVILLE WATER COMPANY
OFFICE BUILDING
MATHIAS PARKWAY
GARDNERVILLE, NV 89410
A.P.N. 1220-10-501-003

REVISION
DATE



TRICE CONSULTING ENGINEERS, LLC
 201 S. Second Street, Suite 200
 Gardnersville, NV 89410
 Phone: (775) 751-1111
 Fax: (775) 751-1112
 Email: info@trice-engineers.com